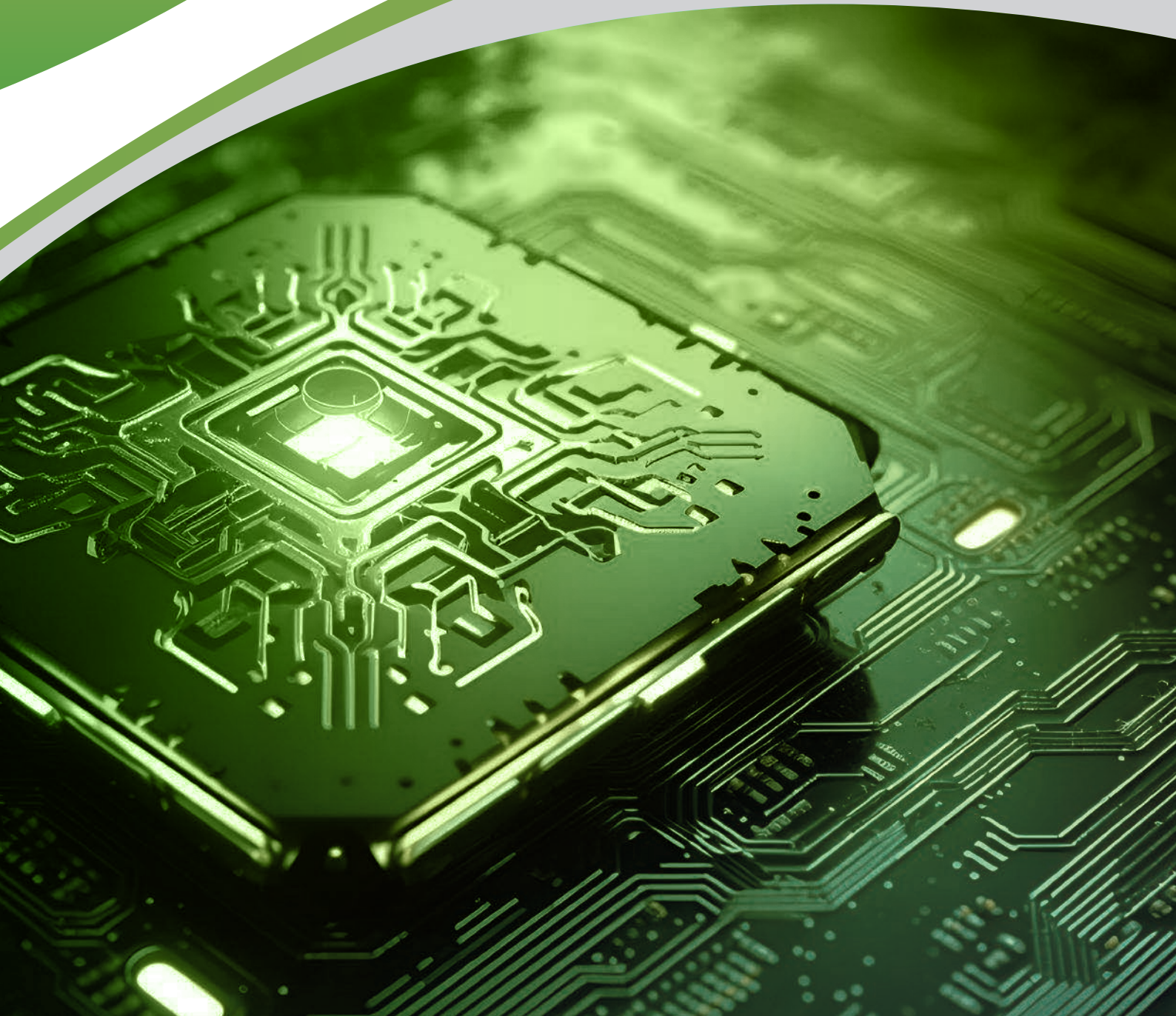


*BRIOC*ΕΛΛΑΝ

Your Preferred Supplier in Electronic Component Sourcing



About Briocean



Briocean was established in 2008 as ISO14001, ISO9001:2015, AS9120B and ANSI/ESDS20.20-2021 certified leading independent electronic component distributor, with our headquarters in Singapore. Our company specialises in insourcing and supply chain management services for the electronics manufacturing clients across a broad range of industries.

Our global network of over 10,000 vetted suppliers allows us to respond to the unique needs of our clients, from reducing component shortages to achieving significant cost savings.

Our robust supplier management system and two state-of-the-art quality assurance centres in Shenzhen and Hong Kong ensure that we deliver reliable, traceable procurement services.

At Briocean, quality is our cornerstone. Our commitment is to ensure that every component we source is of the highest quality.



Top 25 Global Independent Distributors of 2024



2024 Top Global Distributors List



2023 Top Asia Pacific Distributor List



Global Electronics Component Distributor 2023

Overview



8

Offices Worldwide



2

Quality Assurance Centres



100+

Qualified Inspection Engineers



10,000+

Vetted Suppliers

Advantages



Quick Support &
Competitive Pricing



Commitment to
Quality Assurance



Extensive Supply
Chain Network



Flexible Payment Plan



5-Year Warranty



Market Intelligence

Services



Cost Reduction

Achieve significant cost savings through our advanced strategic sourcing and procurement optimisation.



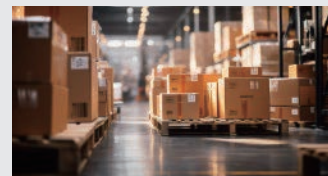
Obsolescence Management

Ensure business continuity by addressing obsolescence challenges with our expertise.



Global Sourcing

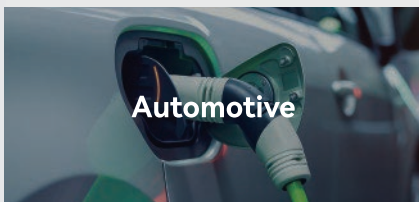
Benefit from our extensive network of over 10,000 vetted global suppliers, ensuring reliable shortage sourcing and PPV solutions.



Excess Inventory Management

Optimise your inventory turnover and enhance ROI with our specialised inventory management solutions.

Industries Served



Automotive



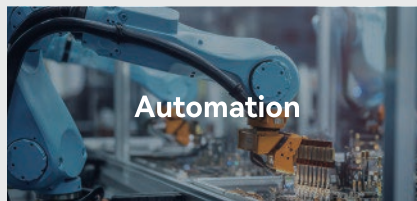
Medical



Artificial Intelligence



Communications



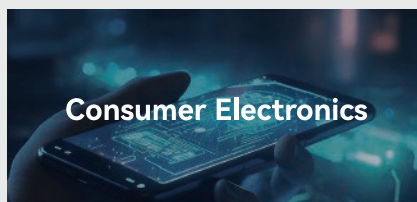
Automation



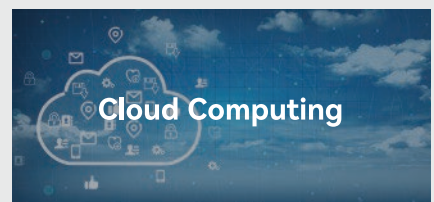
Energy



IoT



Consumer Electronics



Cloud Computing

Product Categories

Comprehensive application across the electronic manufacturing industry.

Integrated Circuits (ICs)

Discrete Semiconductor Products

Circuit Protection

Sensors,
Transducers

Connectors,
Interconnects

Capacitors

Resistors

Relays

Isolators

Memory Cards,
Modules

Power Supplies -
Board Mount

RF/IF and RFID

Memory

SSD

CPU/GPU

FPGA

MCU

Top Selling Brands

Our extensive global network of over 10,000 vetted suppliers enables us to provide high-quality authentic components in the shortest possible time.



4-Tier Quality Inspection Process

Brioclean meticulously inspects, verifies, and tests each component to ensure that it meets the required quality standards, beginning with the label and packaging. It is our responsibility to ensure the quality, reliability, and excellence of each component we source for our manufacturing clients.



Our multi-tiered inspection process allows Brioclean to source high-quality electronic components that are authentic.



TIER 01

Labelling and
Packaging
Verification



TIER 02

Visual and
Marking
Inspection



TIER 03

Functional
Testing



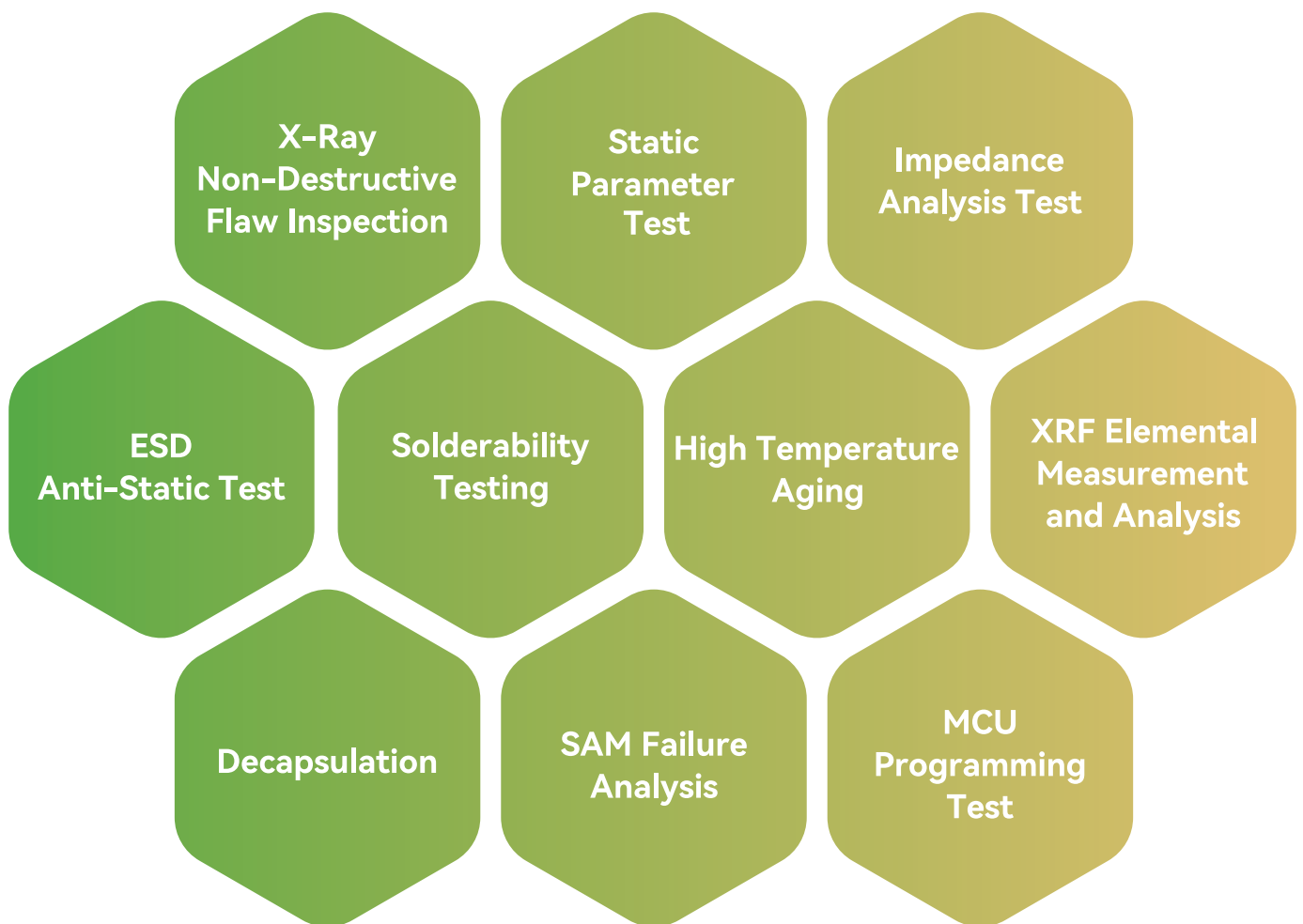
TIER 04

Third Party
Inspection

OBTAIN A DETAILED REPORT WITHIN TWO HOURS

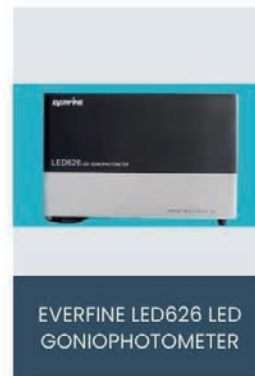
Quality Assurance

Our thorough quality inspection process consists of ten professional testing services to ensure there are no defects or abnormalities that go undetected for the components we sourced.



Inspection Equipment

Using the most advanced functionality and authenticity inspection equipment, Briocean's quality assurance facilities can manage electronic component testing programmes for any project.



*Not limited to the above-mentioned equipment

Supplier Management

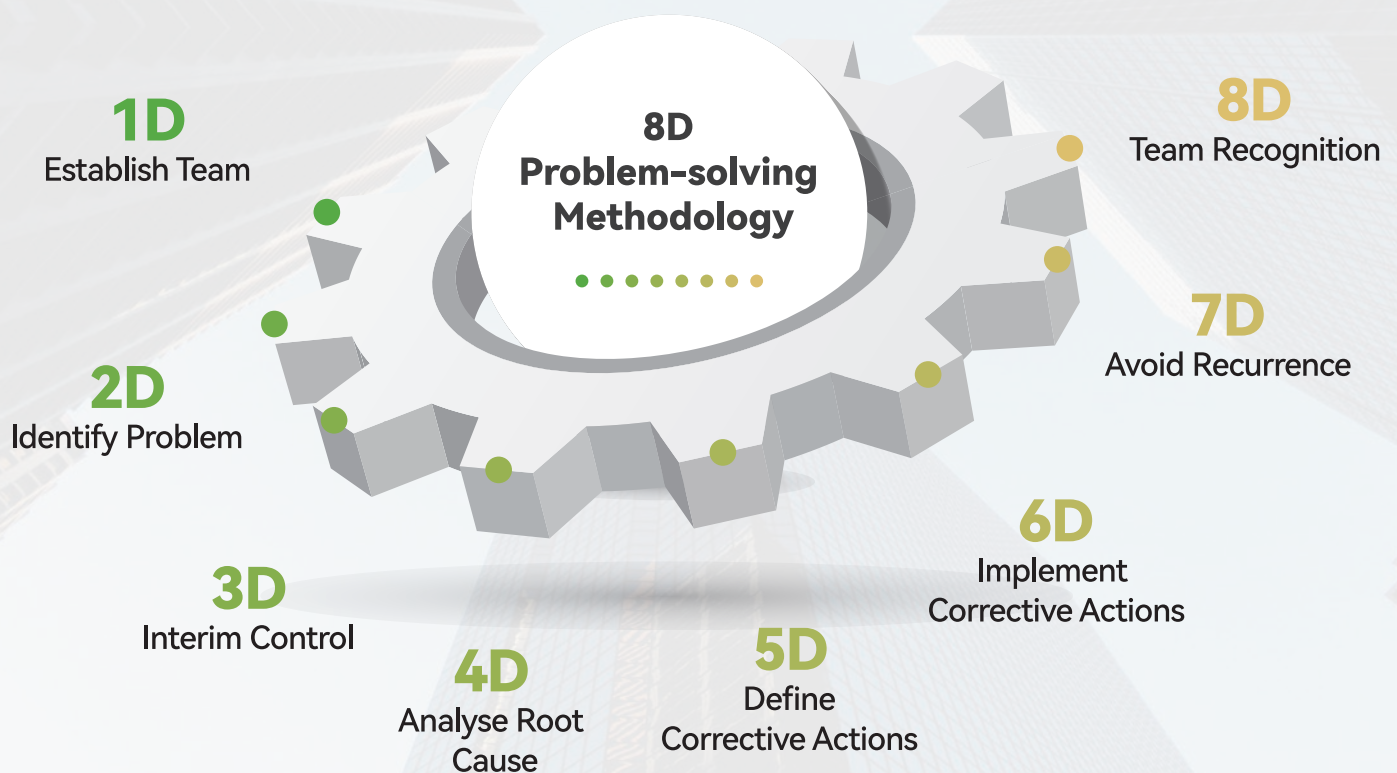
Briocan has developed a professional and systematic Supplier Management System (SMS) to assess the reliability of our suppliers and ensure quality in the procurement and delivery processes. With the aid of a comprehensive and scientific database, we conduct regular assessments to effectively track the performance of our suppliers in terms of delivery, quality, and stability, as well as to identify relevant supplier risks in a timely manner.

Suppliers will only be reflected in Briocan's Supplier Management System once they have passed the auditing process. Briocan then implements the management method of classification by categorising and grading its suppliers.



8D After-sales Customer Management System

At Brioccean, we are dedicated to delivering prompt, professional, and effective customer service. We exceed expectations in order fulfilment by offering exceptional customer support. Utilising the 8D problem-solving methodology, we have developed and optimised our 8D After-sales Customer Management System. This approach enhances after-sales service efficiency, drives quality improvement, and significantly boosts customer satisfaction. Our effective system enables us to address customer concerns swiftly and efficiently, ensuring timely solutions and assured satisfaction.



Empowering Your Supply Chain with Brioccean



SINGAPORE (HQ)

Address: 1 Kim Seng Promenade, #11-01, Great World City Office, East Tower, Singapore 237994



SEOUL

Address: 1013 Daemyung Belion, 10, Gyeongin-ro 53 Ga-gil, Guro-gu, Seoul, South Korea



HONG KONG

Address: Room 1801, 18/F, Grandtech Center, No. 8 On Ping Street, Shek Mun, Shatin, Hong Kong



SHENZHEN

Address: 34th floor, AVIC Centre Building, No. 1018, Huafu Road, Futian District, Shenzhen Guangdong, China



BEIJING

Address: Room 1803, Building #2, North Star New Era, A-13 Bei Yuan Road, Chaoyang District, Beijing



SHANGHAI

Address: 258 Longqi Road, Longhua Street, 22/F 2218/Flat, Block B, Greenland Centre, Xuhui District, Shanghai, China



SUZHOU

Address: 158 Suzhou Road, 32/F 3205/Flat, Phoenix International Building, Wuzhong District, Suzhou City, Jiangsu Province, China



XI'AN

Address: 51 Tangyan Road, 7/F 11/Flat, China Life Shanxi Branch Comprehensive Building, Yanta District, Xi'an City, Shanxi Province, China

Let's connect today !

✉ sales@brioccean.com

🌐 www.brioccean.com

☎ +65 85817966



Follow us on LinkedIn

Follow us on Facebook

Follow us on X

BRIOCEAN

Headquarters:
Briocean Singapore Pte Ltd

Branch Office:
Briocean Technology Co.,Ltd

