

# HIGH-RISK OR COUNTERFEIT PARTS REPORT

QUALITY  
ASSURANCE  
CENTRE

OCTOBER 2025

A large, diamond-shaped graphic with a green-to-yellow gradient is centered on the left side of the slide. It is overlaid on a white square outline. The word "AGENDA" is written in bold, black, sans-serif capital letters in the center of the diamond.

# AGENDA

- 1 About Briocean  
Quality Assurance  
Centre**
- 2 Tier-1 Inspection  
Interception List**
- 3 Tier-2 Inspection  
Interception List**

01

# About Brioccean Quality Assurance Centre



## 1.1 Briocean Quality Assurance Centre

**BRIOCÉAN**

Briocean has constructed two Quality Assurance (QA) Centres, separately in Shenzhen and Hong Kong, each with a total area of 2,000sqm. The centres have over 100 state-of-the-art professional testing equipment and a group of professional qualified inspection engineers.

It adopts the 3-tier international standard QA process with the 4th tier outsourced testing to third party as part of our strategic partnership. These enable us to deliver only authentic quality electronic components to our clients.

Briocean's QA Centre is internationally recognised, awarded with **ISO14001**, **ISO 9001:2015**, **AS9120B** and **AS6081** meets **IDEA**, and **ISO 17025** standards.



## 1.2 Briocean Quality Assurance Centre

BRIOCEAN

As an industry leader in QA, Briocean adopts a zero-tolerance policy towards counterfeit chips. Our stringent quality assurance process boasts a 100% interception rate to ensure no counterfeits get mixed into our clients' supply chain.

In this report, you will find the list of high-risk or counterfeit parts intercepted by Briocean QA Centre's inspection engineers. This list comprises of the shipments intercepted in the month of September 2025.

02

## Tier-1 Inspection Interception List



## 2.0 Tier-1 Inspection Interception List

BRIOCEAN

### Labelling & Packaging Verification

Comparing of the shipment's label and packaging with the original label and packaging in Brioccean's QC database.

Counterfeit Interception Rate:

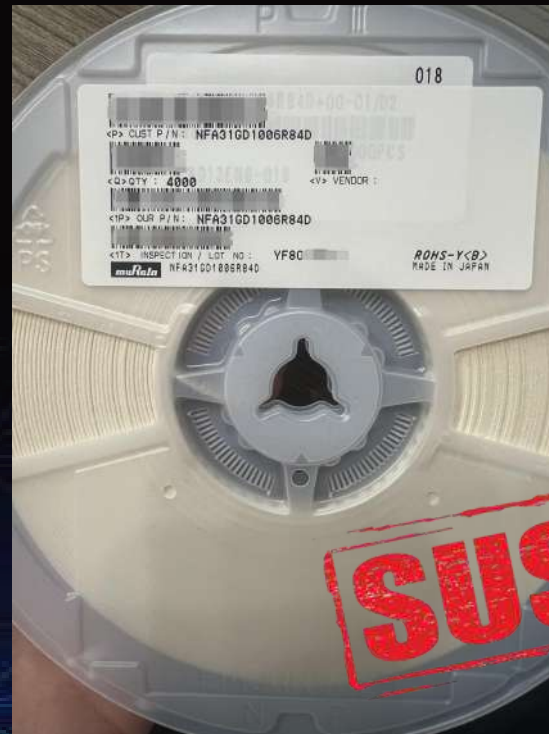


\*List is arranged in alphabetical order.

## 2.1

## High-Risk Incoming Materials

Part Number	Brand	Country of Manufacture	Date Code
NFA31GD1006R84D	MURATA	JAPAN	/

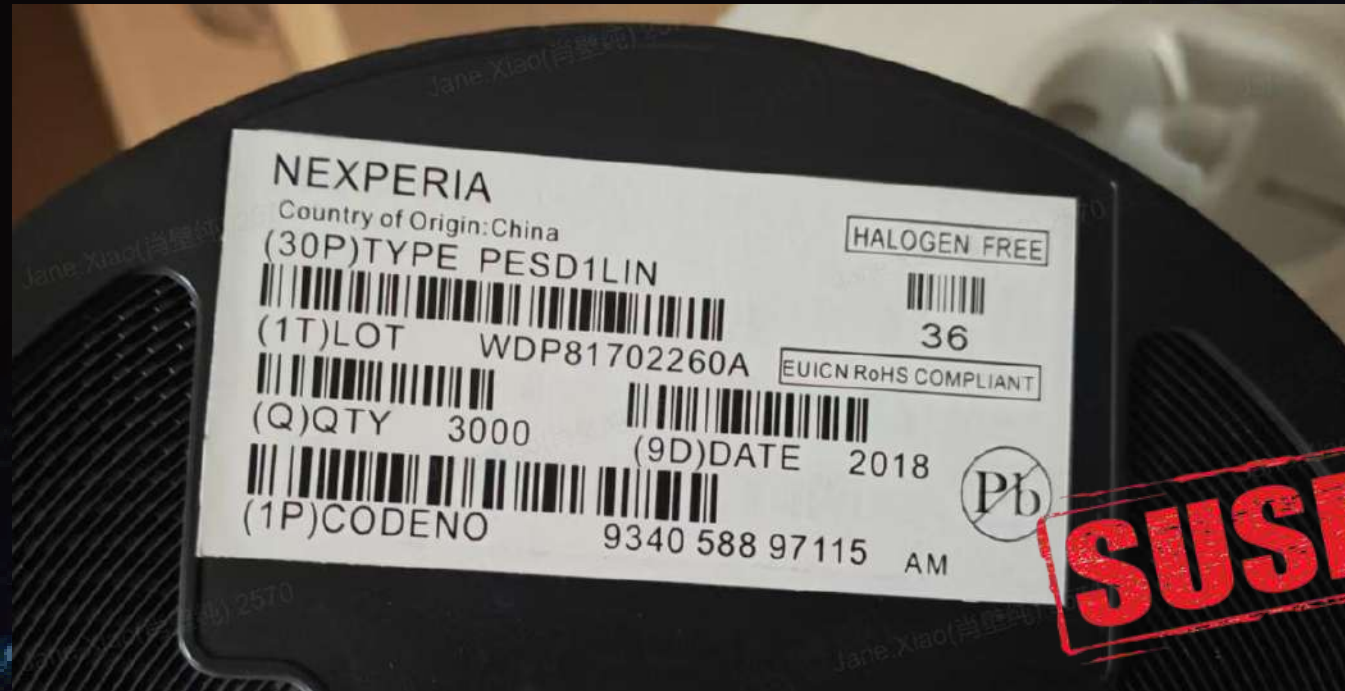


Your preferred supplier in global sourcing



## High-Risk Incoming Materials

Part Number	Brand	Country of Manufacture	Date Code
PESD1LIN	NEXPERIA	CHINA	2018



## 2.3

## NEXPERIA

BRIOCEAN

## High-Risk Incoming Materials

Part Number	Brand	Country of Manufacture	Date Code
PESD1LIN	NEXPERIA	CHINA	2443



03

## Tier-2 Inspection Interception List

## 3.0 Tier-2 Inspection Interception List

BRIOCÉAN

### VISUAL & MARKING INSEPECTION

With a magnification up to 160x, the LEICA microscope is used to inspect the interior and exterior sides of the component for its dimensions and check for scratches, polishing, breakage or oxidation on the BGA.

Counterfeit Interception Rate:



\*List is arranged in alphabetical order.

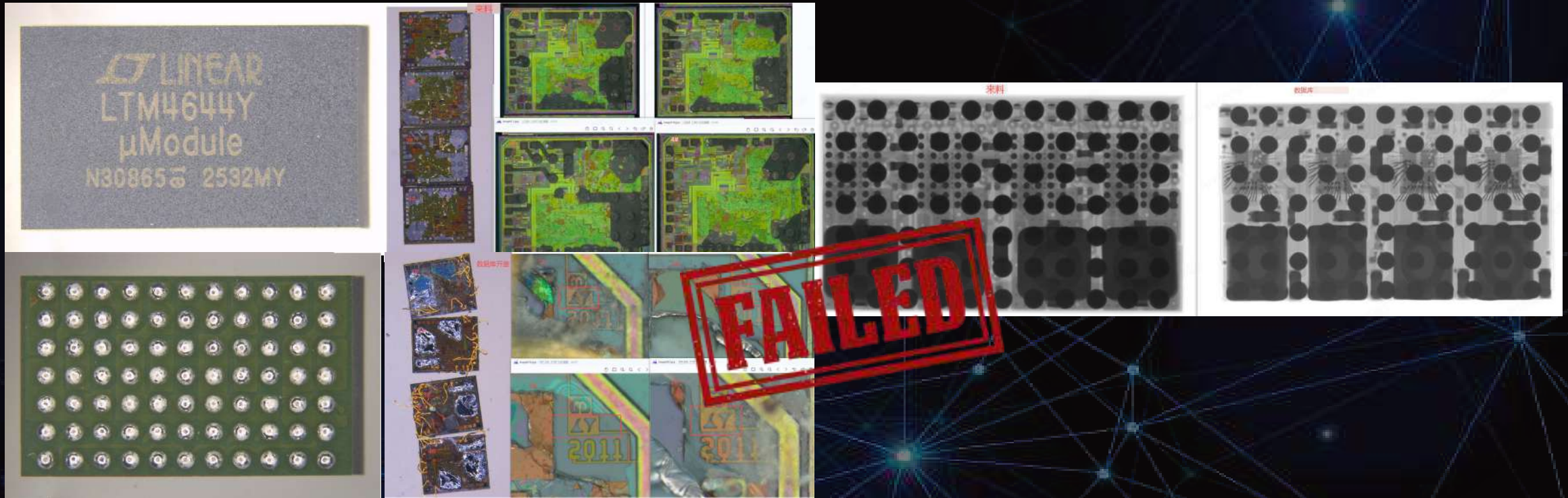


## 3.1 ADI

BRIOCEAN

### High-Risk Incoming Materials

Part Number	Brand	Country of Manufacture	Date Code
LTM4644IY#PBF	ADI	MALAYSIA	2532



## 3.2

## GREENLIANT

BRIOCEAN

## High-Risk Incoming Materials

Part Number	Brand	Country of Manufacture	Date Code
GLS85LS1032P-S-I-FZJE-TT095	GREENLIANT	/	17+





## 3.3

## INTEL

BRIOCEAN

## High-Risk Incoming Materials

Part Number	Brand	Country of Manufacture	Date Code
EPF10K50VRI240-3	INTEL	HONGKONG	1707



## 3.4 ISOCOM

### High-Risk Incoming Materials

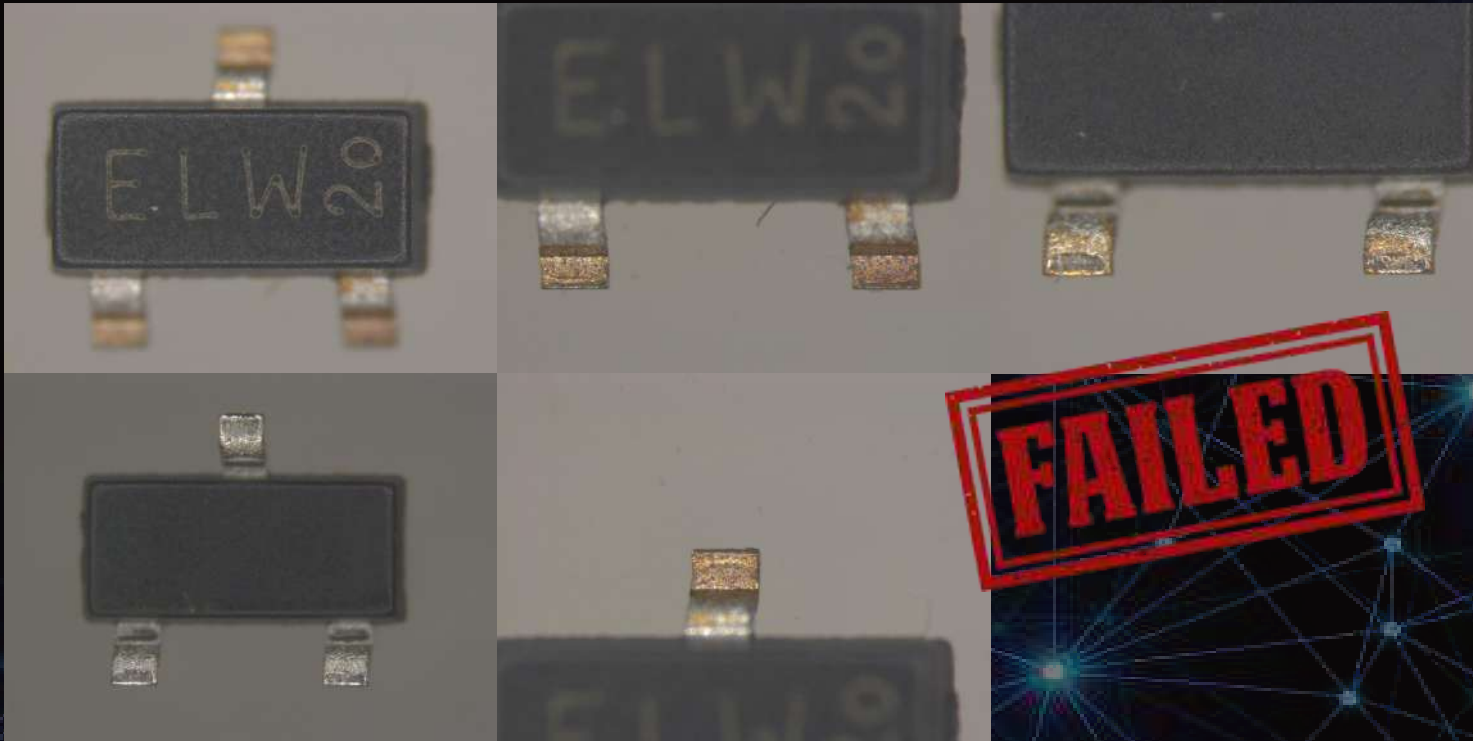
Part Number	Brand	Country of Manufacture	Date Code
H11L1SMT&R	ISOCOM	TAIWAN	2139





## High-Risk Incoming Materials

Part Number	Brand	Country of Manufacture	Date Code
PMV280ENEAR	NEXPERIA	CHINA	2243



## High-Risk Incoming Materials

Part Number	Brand	Country of Manufacture	Date Code
BZX84J-C16	NEXPERIA	CHINA	1831



## High-Risk Incoming Materials

Part Number	Brand	Country of Manufacture	Date Code
TPS2375DR	TI	/	2500

**PCN Number:** 20180322004 **Notification Date:** April 20, 2018

**Title:** Top-side symbol font change for Selected Device(s)

**Customer Contact:** PCN Manager **Dept:** Quality Services

**Change Type:**

<input type="checkbox"/> Assembly Site	<input type="checkbox"/> Design	<input type="checkbox"/> Wafer Bump Site
<input type="checkbox"/> Assembly Process	<input type="checkbox"/> Data Sheet	<input type="checkbox"/> Wafer Bump Material
<input type="checkbox"/> Assembly Materials	<input type="checkbox"/> Part number change	<input type="checkbox"/> Wafer Bump Process
<input type="checkbox"/> Mechanical Specification	<input type="checkbox"/> Test Site	<input type="checkbox"/> Wafer Fab Site
<input checked="" type="checkbox"/> Packing/Shipping/Labeling	<input type="checkbox"/> Test Process	<input type="checkbox"/> Wafer Fab Materials
		<input type="checkbox"/> Wafer Fab Process

**PCN Details**

**Description of Change:**

Texas Instruments is pleased to announce a Top side symbol font change from Standard Font to OCR-A (Optical Character Recognition) Font type for the affected devices. Symbolization sample comparison are as follows:

	Current Standard Font	Proposed OCR-A Font
Device Symbol sample		

**Reason for Change:**

Improve optical recognition during Auto Visual Inspection (AVI) and align with ISO 1073-1:1976 standard

**Anticipated impact on Fit, Form, Function, Quality or Reliability (positive / negative):**

None

**Anticipated impact on Material Declaration:**

Brioccean Technology

THANK YOU

Your preferred supplier in global sourcing