

HIGH-RISK OR COUNTERFEIT PARTS REPORT

QUALITY
ASSURANCE
CENTRE

NOVEMBER 2025

A large, diamond-shaped graphic is positioned on the left side of the slide. It has a green-to-yellow gradient and is centered within a white square frame. The word "AGENDA" is written in bold, black, uppercase letters in the center of the diamond.

AGENDA

- 1 About Briocean
Quality Assurance
Centre**
- 2 Tier-1 Inspection
Interception List**
- 3 Tier-2 Inspection
Interception List**

01

About Brioccean Quality Assurance Centre

1.1 Briocean Quality Assurance Centre

BRIOCÉAN

Briocean has constructed two Quality Assurance (QA) Centres, separately in Shenzhen and Hong Kong, each with a total area of 2,000sqm. The centres have over 100 state-of-the-art professional testing equipment and a group of professional qualified inspection engineers.

It adopts the 3-tier international standard QA process with the 4th tier outsourced testing to third party as part of our strategic partnership. These enable us to deliver only authentic quality electronic components to our clients.

Briocean's QA Centre is internationally recognised, awarded with **ISO14001**, **ISO 9001:2015**, **AS9120B** and **AS6081** meets **IDEA**, and **ISO 17025** standards.



1.2 Briocean Quality Assurance Centre

BRIOCEAN

As an industry leader in QA, Briocean adopts a zero-tolerance policy towards counterfeit chips. Our stringent quality assurance process boasts a 100% interception rate to ensure no counterfeits get mixed into our clients' supply chain.

In this report, you will find the list of high-risk or counterfeit parts intercepted by Briocean QA Centre's inspection engineers. This list comprises of the shipments intercepted in the month of November 2025.

02

Tier-1 Inspection Interception List

2.0 Tier-1 Inspection Interception List

BRIOCEAN

Labelling & Packaging Verification

Comparing of the shipment's label and packaging with the original label and packaging in Brioccean's QC database.

Counterfeit Interception Rate:



*List is arranged in alphabetical order.

2.1

DIODES

High-Risk Incoming Materials

Part Number	Brand	Country of Manufacture	Date Code
DMN6075SQ-7	DIODES	CHINA	21+



High-Risk Incoming Materials

Part Number	Brand	Country of Manufacture	Date Code
BAS316-Q	NEXPERIA	CHINA	2525



2.3

NEXPERIA

BRIOCEAN

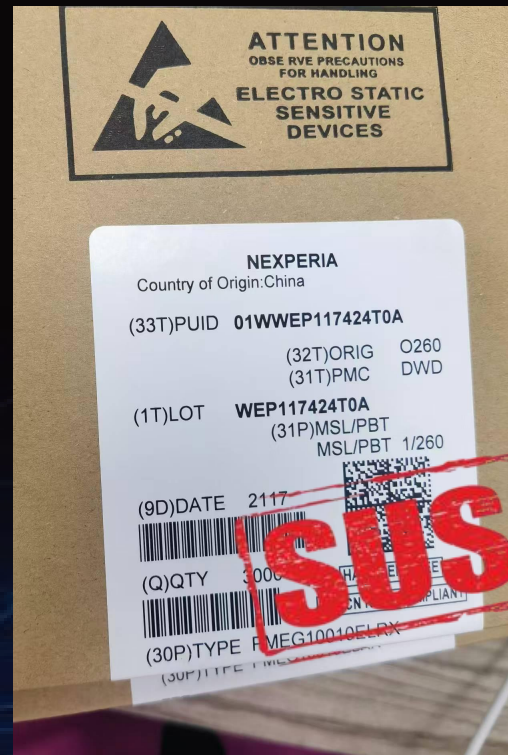
High-Risk Incoming Materials

Part Number	Brand	Country of Manufacture	Date Code
PESD1LN,115	NEXPERIA	CHINA	2532



High-Risk Incoming Materials

Part Number	Brand	Country of Manufacture	Date Code
PMEG10010ELRX	NEXPERIA	CHINA	2117



High-Risk Incoming Materials

Part Number	Brand	Country of Manufacture	Date Code
PMEG4002EJ	NEXPERIA	CHINA	2538



High-Risk Incoming Materials

Part Number	Brand	Country of Manufacture	Date Code
BSS138AKAR	NEXPERIA	CHINA	2503



High-Risk Incoming Materials

Part Number	Brand	Country of Manufacture	Date Code
H5TQ4G63EFR-RDC	SK HYNIX	CHINA	2205



High-Risk Incoming Materials

Part Number	Brand	Country of Manufacture	Date Code
K4B4G1646E-BYMA	SAMSUNG	CHINA	2031



High-Risk Incoming Materials

Part Number	Brand	Country of Manufacture	Date Code
K4A8G165WC-BCWE	SAMSUNG	KOREA	2506

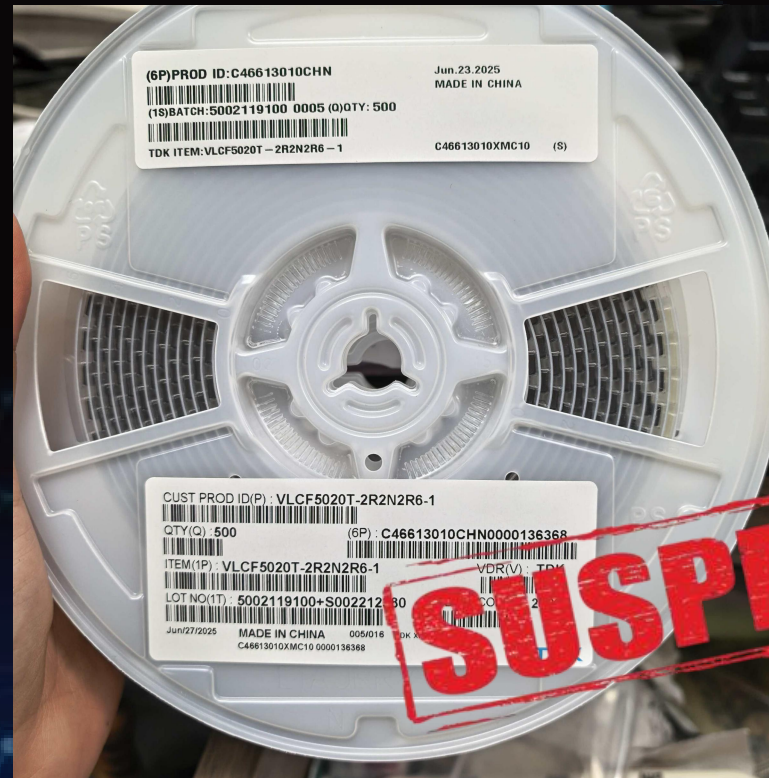


2.10 TDK

BRIOCEAN

High-Risk Incoming Materials

Part Number	Brand	Country of Manufacture	Date Code
VLCF5020T-2R2N2R6-1	TDK	CHINA	2526



03

Tier-2 Inspection Interception List

3.0 Tier-2 Inspection Interception List

BRIOCEAN

VISUAL & MARKING INSEPECTION

With a magnification up to 160x, the LEICA microscope is used to inspect the interior and exterior sides of the component for its dimensions and check for scratches, polishing, breakage or oxidation on the BGA.

Counterfeit Interception Rate:



*List is arranged in alphabetical order.

3.1

NEXPERIA

BRIOCEAN

High-risk incoming materials

Part Number	Brand	Country of Manufacture	Date Code
BZX84-C5V1	NEXPERIA	CHINA	2126

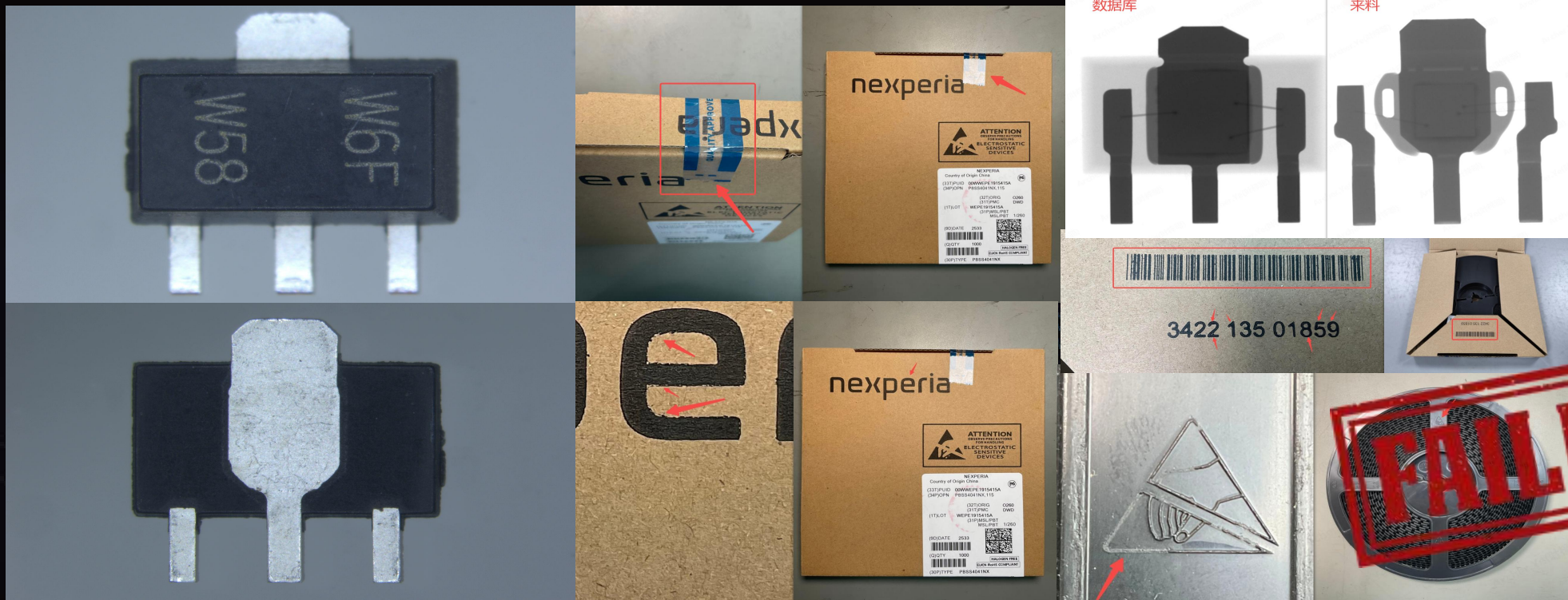


NEXPERIA

BRIOCEAN

High-risk incoming materials

Part Number	Brand	Country of Manufacture	Date Code
PBSS4041NX,115	NEXPERIA	CHINA	2533



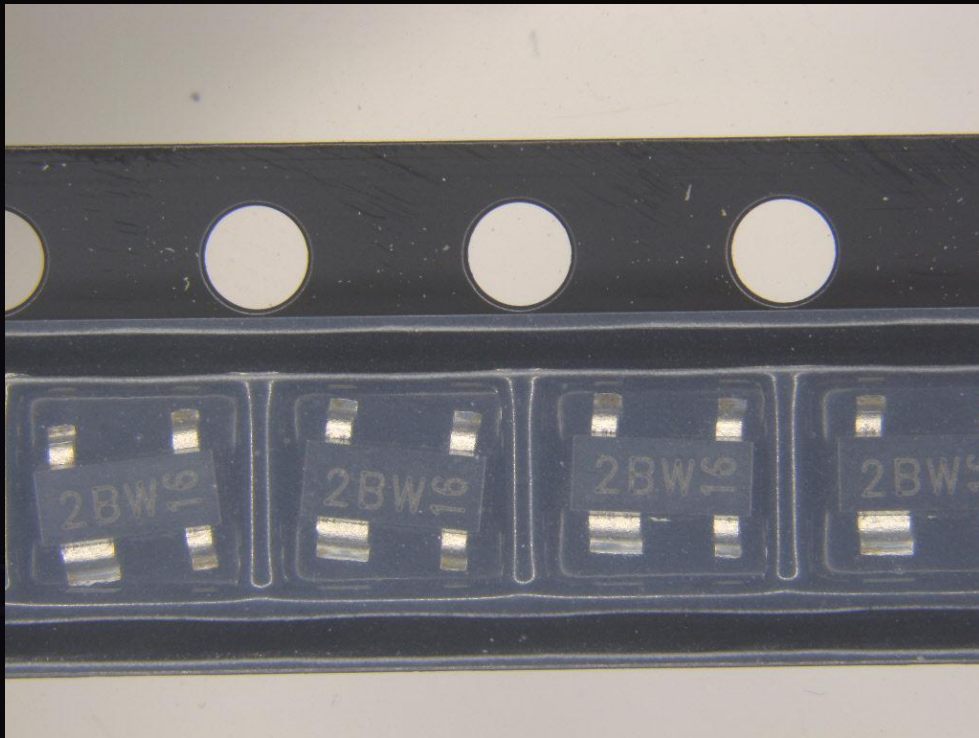
3.3

NEXPERIA

BRIOCEAN

High-risk incoming materials

Part Number	Brand	Country of Manufacture	Date Code
PESD2ETH-X	NEXPERIA	CHINA	2124



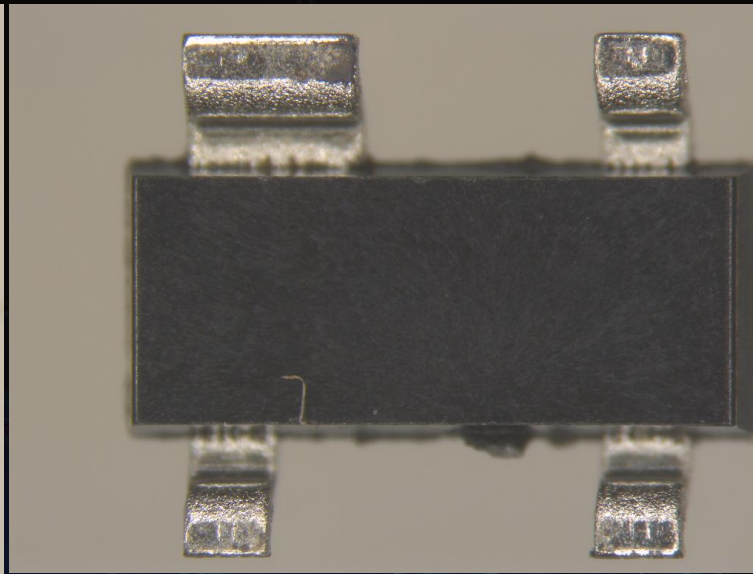
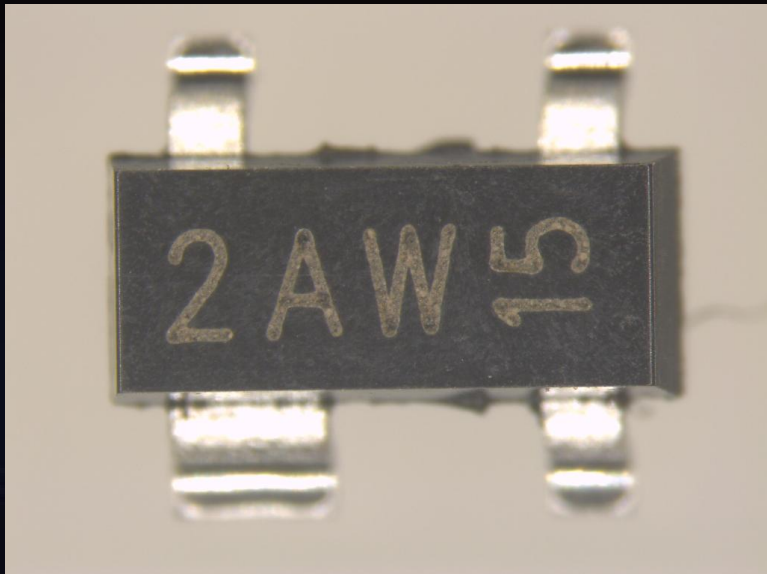
3.4

NEXPERIA

BRIOCEAN

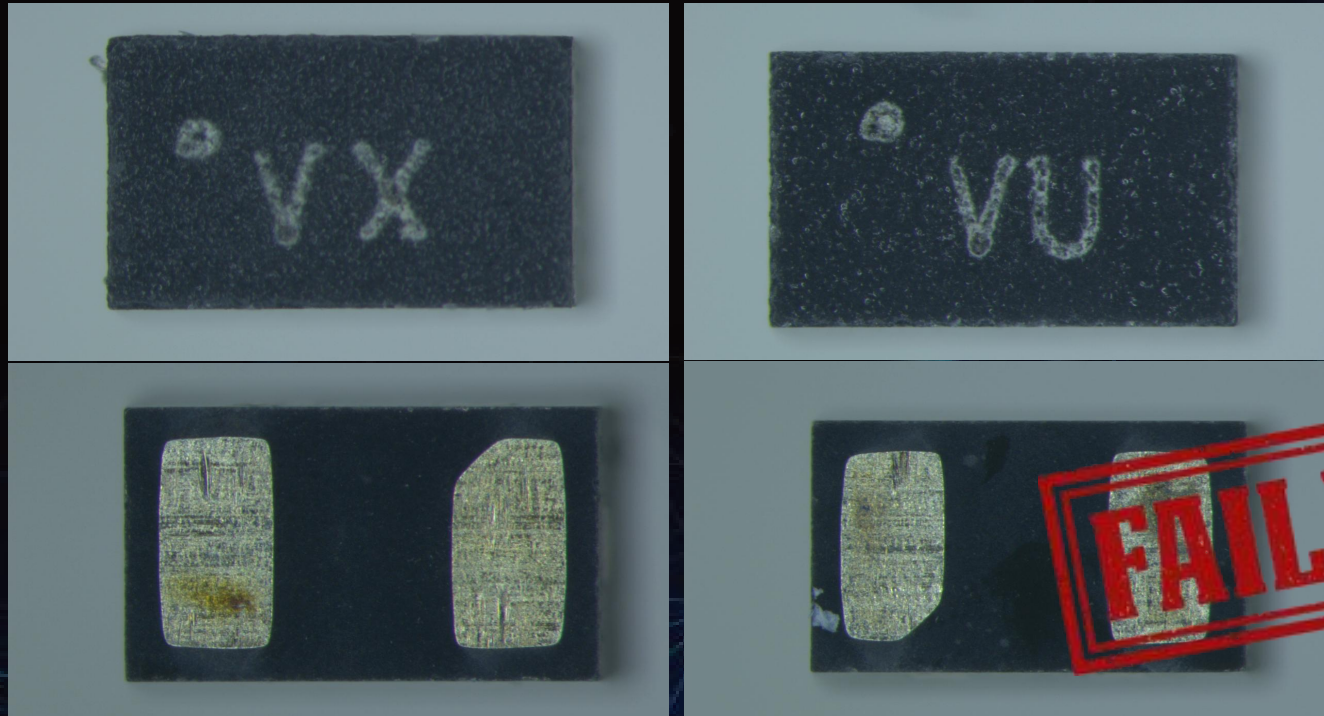
High-risk incoming materials

Part Number	Brand	Country of Manufacture	Date Code
PESD2ETH-AX	NEXPERIA	CHINA	2120



High-risk incoming materials

Part Number	Brand	Country of Manufacture	Date Code
SZESD7461N2T5G	ONSEMI	CHINA	2235/2243



Brioccean Technology

THANK YOU

Your preferred supplier in global sourcing