

# HIGH-RISK OR COUNTERFEIT PARTS REPORT

QUALITY  
ASSURANCE  
CENTRE

DECEMBER 2025

A large graphic on the left side of the slide. It features a white square outline. Inside the square, a large diamond shape is oriented with its points towards the corners. The diamond has a color gradient, starting with a teal color at the top-left point and transitioning through green to a yellow color at the bottom-right point. The word "AGENDA" is written in a bold, black, sans-serif font in the center of the diamond.

# AGENDA

- 1 **About Briocean  
Quality Assurance  
Centre**
- 2 **Tier-1 Inspection  
Interception List**
- 3 **Tier-2 Inspection  
Interception List**

01

# About Brioclean Quality Assurance Centre



## 1.1 Briocean Quality Assurance Centre

**BRIOCEAN**

Briocean has constructed two Quality Assurance (QA) Centres, separately in Shenzhen and Hong Kong, each with a total area of 2,000sqm. The centres have over 100 state-of-the-art professional testing equipment and a group of professional qualified inspection engineers.

It adopts the 3-tier international standard QA process with the 4th tier outsourced testing to third party as part of our strategic partnership. These enable us to deliver only authentic quality electronic components to our clients.

Briocean's QA Centre is internationally recognised, awarded with **ISO14001**, **ISO 9001:2015**, **AS9120B** and **AS6081** meets **IDEA**, and **ISO 17025** standards.



## 1.2 Briocean Quality Assurance Centre

BRIOCEAN

As an industry leader in QA, Briocean adopts a zero-tolerance policy towards counterfeit chips. Our stringent quality assurance process boasts a 100% interception rate to ensure no counterfeits get mixed into our clients' supply chain.

In this report, you will find the list of high-risk or counterfeit parts intercepted by Briocean QA Centre's inspection engineers. This list comprises of the shipments intercepted in the month of November 2025.

02

## Tier-1 Inspection Interception List

## 2.0 Tier-1 Inspection Interception List

BRIOCEAN

### Labelling & Packaging Verification

Comparing of the shipment's label and packaging with the original label and packaging in Brioccean's QC database.

Counterfeit Interception Rate:



\*List is arranged in alphabetical order.



## 2.1 NXP

### High-Risk Incoming Materials

Part Number	Brand	Country of Manufacture	Date Code
MC9S12XET256MAA	NXP	MALAYSIA	2205





## High-Risk Incoming Materials

Part Number	Brand	Country of Manufacture	Date Code
MC74HC597ADTR2G	ONSEMI	PHILIPPINES	2308



## High-Risk Incoming Materials

Part Number	Brand	Country of Manufacture	Date Code
K4A8G165WC-BCTD	SAMSUNG	KOREA	2502



## High-Risk Incoming Materials

Part Number	Brand	Country of Manufacture	Date Code
KLM8G1GETF-B041	SAMSUNG	KOREA	2416





## High-Risk Incoming Materials

Part Number	Brand	Country of Manufacture	Date Code
K4F6E3S4HM-MGCJ	SAMSUNG	KOREA	2440





# 03

## Tier-2 Inspection Interception List

## 3.0 Tier-2 Inspection Interception List

BRIOCÉAN

### VISUAL & MARKING INSEPECTION

With a magnification up to 160x, the LEICA microscope is used to inspect the interior and exterior sides of the component for its dimensions and check for scratches, polishing, breakage or oxidation on the BGA.

Counterfeit Interception Rate:



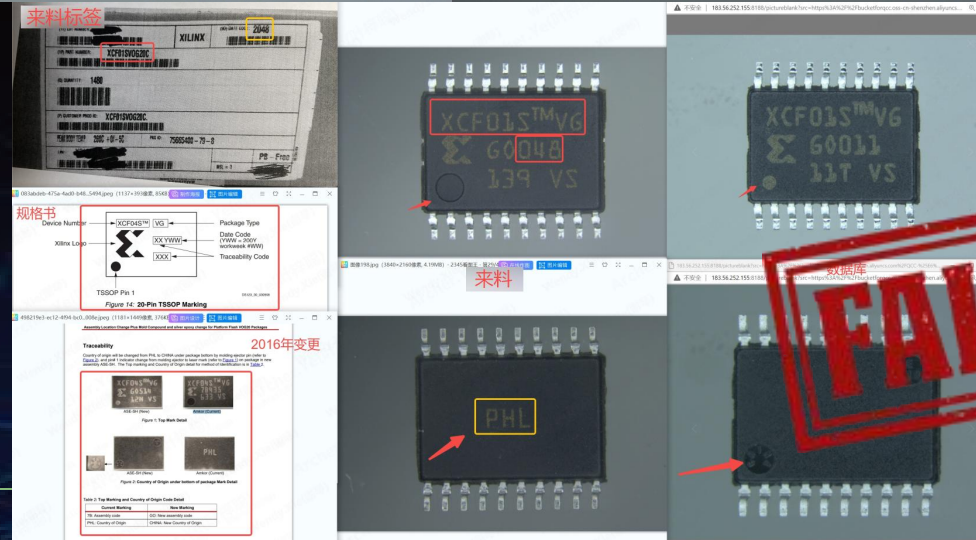
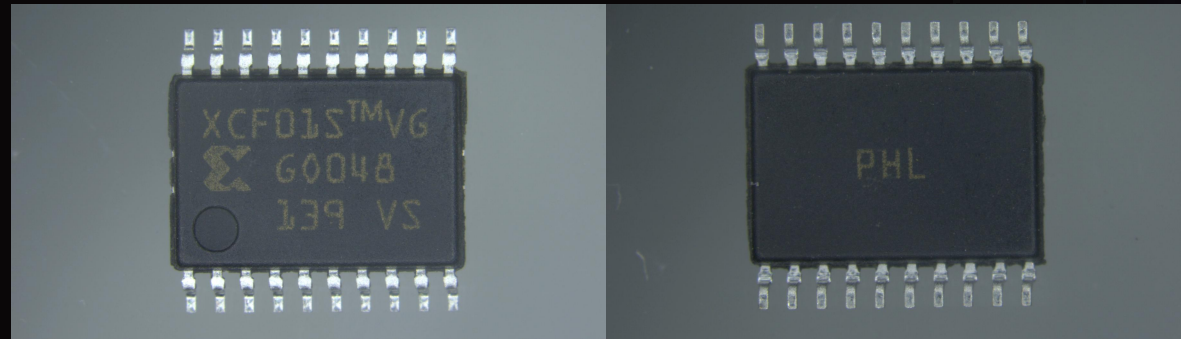
\*List is arranged in alphabetical order.

## 3.1 XILINX

**BRIOCÉAN**

## High-risk incoming materials

Part Number	Brand	Country of Manufacture	Date Code
XCF01SVOG20C	XILINX	PHILIPPINES	10+



**Your preferred supplier in global sourcing**

[www.brioccean.com](http://www.brioccean.com)



## 3.2

## BROADCOM

BRIOCEAN

## High-risk incoming materials

Part Number	Brand	Country of Manufacture	Date Code
BCM68461A1KRFBG	BROADCOM	KOREA	1827





Brioccean Technology

THANK YOU

Your preferred supplier in global sourcing