

HIGH-RISK OR COUNTERFEIT PARTS REPORT

QUALITY
ASSURANCE
CENTRE

APRIL 2026



AGENDA

- 1 **About Brioccean
Quality Assurance
Centre**
- 2 **Tier-1 Inspection
Interception List**
- 3 **Tier-2 Inspection
Interception List**

01

**About Briocean
Quality Assurance Centre**

1.1 Briocean Quality Assurance Centre

BRIOCEAN

Briocean has constructed two Quality Assurance (QA) Centres, separately in Shenzhen and Hong Kong, each with a total area of 2,000sqm. The centres have over 100 state-of-the-art professional testing equipment and a group of professional qualified inspection engineers.

It adopts the 3-tier international standard QA process with the 4th tier outsourced testing to third party as part of our strategic partnership. These enable us to deliver only authentic quality electronic components to our clients.

Briocean's QA Centre is internationally recognised, awarded with ISO14001, ISO 9001:2015, AS9120B and AS6081 meets IDEA, and ISO 17025 standards.



1.2 Briocean Quality Assurance Centre

BRIOCEAN

As an industry leader in QA, Briocean adopts a zero-tolerance policy towards counterfeit chips. Our stringent quality assurance process boasts a 100% interception rate to ensure no counterfeits get mixed into our clients' supply chain.

In this report, you will find the list of high-risk or counterfeit parts intercepted by Briocean QA Centre's inspection engineers. This list comprises of the shipments intercepted in the month of April 2026.

02

Tier-1 Inspection Interception List

2.0 Tier-1 Inspection Interception List

BRIOCEAN

Labelling & Packaging Verification

Comparing of the shipment's label and packaging with the original label and packaging in Brioccean's QC database.

Counterfeit Interception Rate:



*List is arranged in alphabetical order.

2.1 ADI

High-Risk Incoming Parts

| Part Number | Brand | Country of Manufacture | Date Code |
|------------------|-------|------------------------|-----------|
| ADRF5026BCCZN-R7 | ADI | KOREA | 2225 |



2.2 BOURNS

High-Risk Incoming Parts

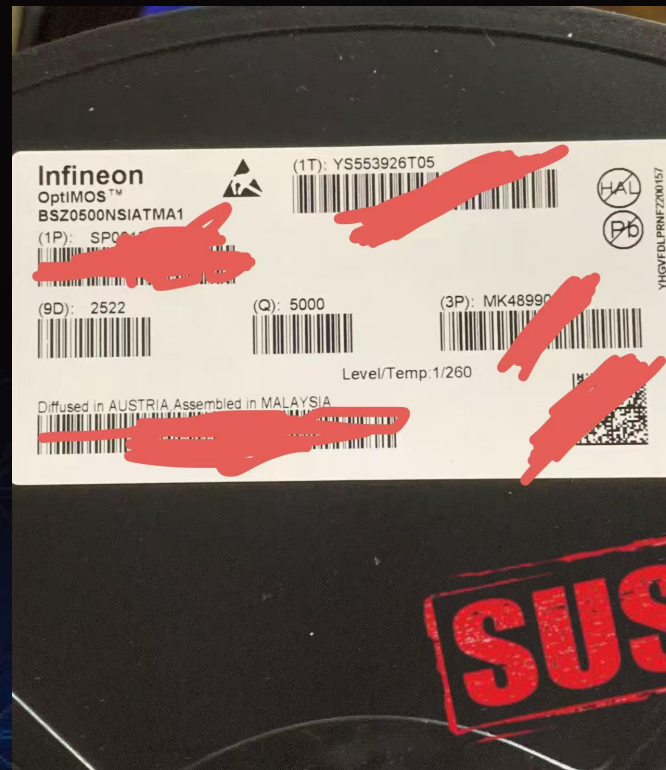
| Part Number | Brand | Country of Manufacture | Date Code |
|----------------|--------|------------------------|-----------|
| SRP1040VA-4R7M | BOURNS | CHINA | 2432 |



2.3 INFINEON

High-Risk Incoming Parts

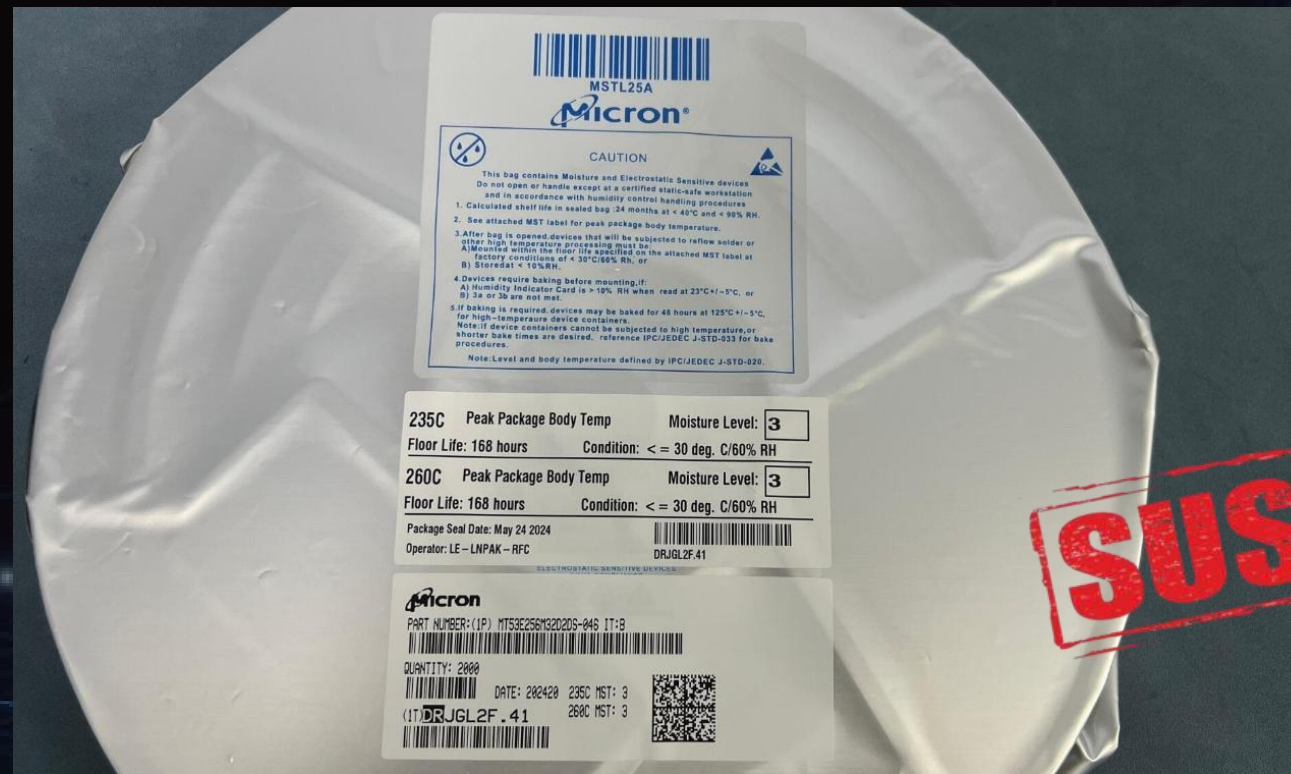
| Part Number | Brand | Country of Manufacture | Date Code |
|-----------------|----------|------------------------|-----------|
| BSZ0500NSIATMA1 | INFINEON | MALAYSIA | 2522 |



2.4 MICRON

High-Risk Incoming Parts

| Part Number | Brand | Country of Manufacture | Date Code |
|--------------------------|--------|------------------------|-----------|
| MT53E256M32D2DS-046 IT:B | MICRON | N/A | 2420 |



2.5 NEXPERIA

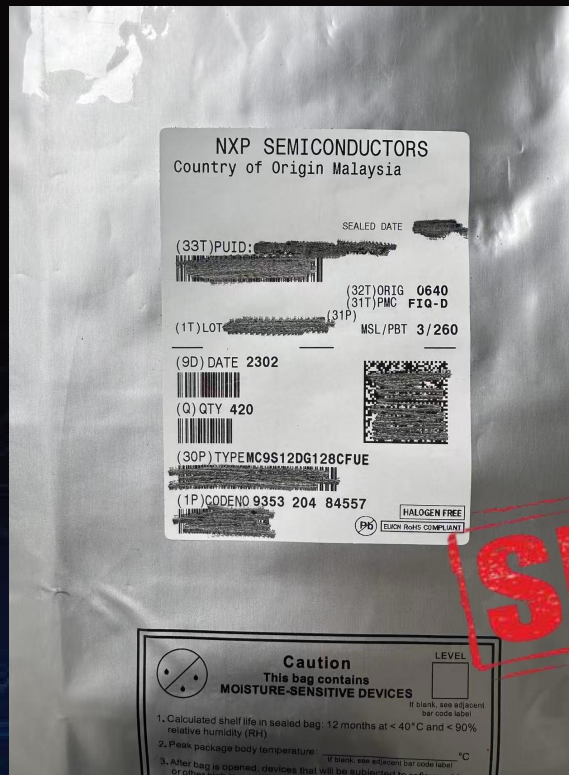
High-Risk Incoming Parts

| Part Number | Brand | Country of Manufacture | Date Code |
|--------------|----------|------------------------|-----------|
| BUK6D43-40PX | NEXPERIA | CHINA | 2547 |



High-Risk Incoming Parts

| Part Number | Brand | Country of Manufacture | Date Code |
|-----------------|-------|------------------------|-----------|
| MC9S12DG128CFUE | NXP | MALAYSIA | 2302 |



SUSPECT

2.7 ONSEMI

High-Risk Incoming Parts

| Part Number | Brand | Country of Manufacture | Date Code |
|-------------|--------|------------------------|-----------|
| BUX85G | ONSEMI | United States | 2136 |



2.8 SAMSUNG

High-Risk Incoming Parts

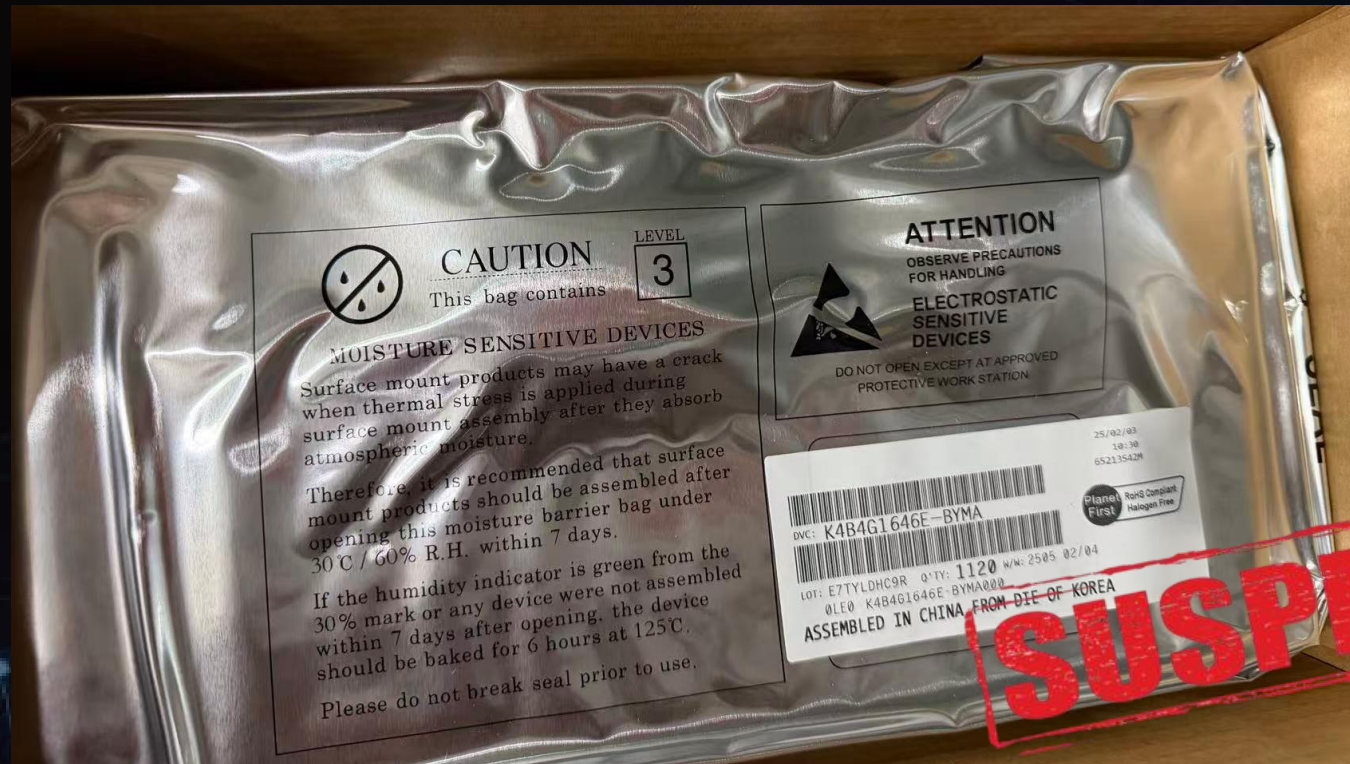
| Part Number | Brand | Country of Manufacture | Date Code |
|--------------------|---------|------------------------|-----------|
| M321R8GA0PB0-CWMXJ | SAMSUNG | KOREA | 2523 |



2.9 SAMSUNG

High-Risk Incoming Parts

| Part Number | Brand | Country of Manufacture | Date Code |
|-----------------|---------|------------------------|-----------|
| K4B4G1646E-BYMA | SAMSUNG | CHINA | 2505 |



2.10 XILINX

High-Risk Incoming Parts

| Part Number | Brand | Country of Manufacture | Date Code |
|-------------------|--------|------------------------|-----------|
| XC5VLX30-1FFG676C | XILINX | TAIWAN,CHINA | 2413 |



2.11 YAGEO

High-Risk Incoming Parts

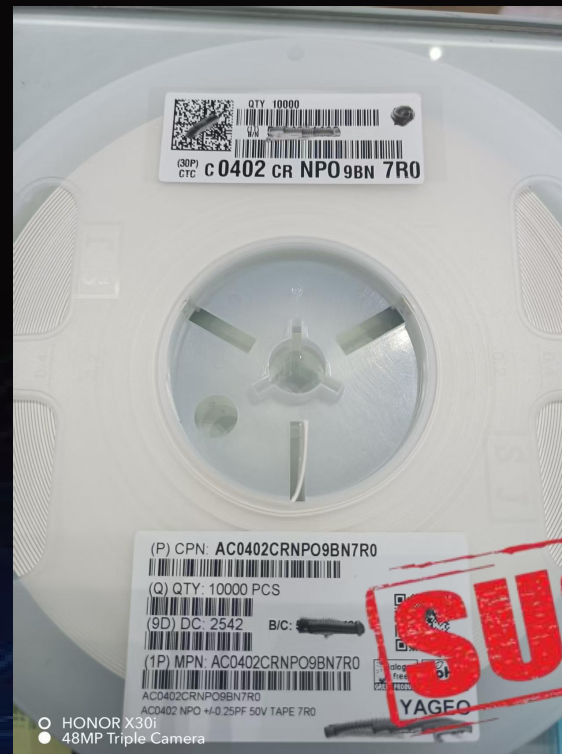
| Part Number | Brand | Country of Manufacture | Date Code |
|-----------------|-------|------------------------|-----------|
| AC2512JK-075M1L | YAGEO | N/A | 2603 |



2.12 YAGEO

High-Risk Incoming Parts

| Part Number | Brand | Country of Manufacture | Date Code |
|-------------------|-------|------------------------|-----------|
| AC0402CRNPO9BN7R0 | YAGEO | CHINA | 2542 |



03

Tier-2 Inspection Interception List

3.0 Tier-2 Inspection Interception List

BRIOCEAN

VISUAL & MARKING INSEPECTION

With a magnification up to 160x, the LEICA microscope is used to inspect the interior and exterior sides of the component for its dimensions and check for scratches, polishing, breakage or oxidation on the BGA.

Counterfeit Interception Rate:

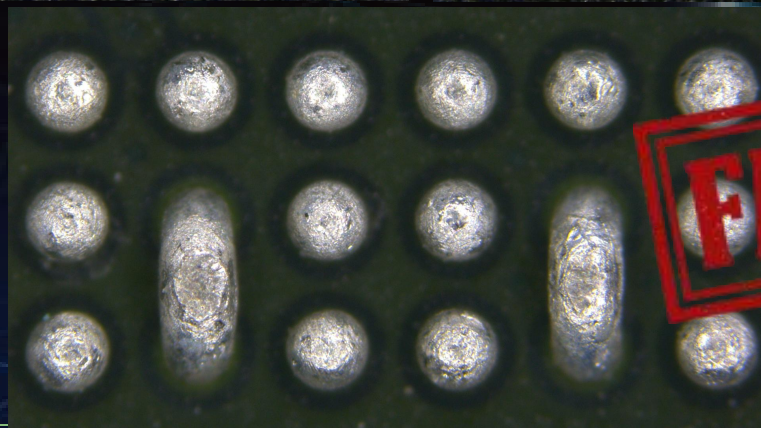
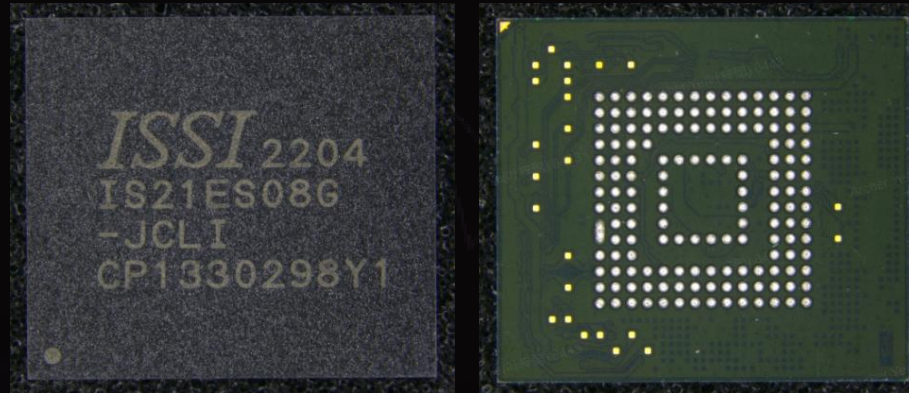


*List is arranged in alphabetical order.

3.1 ISSI

High-risk Incoming Parts

| Part Number | Brand | Country of Manufacture | Date Code |
|----------------|-------|------------------------|-----------|
| IS21ES08G-JCLI | ISSI | TAIWAN, CHINA | 2204 |



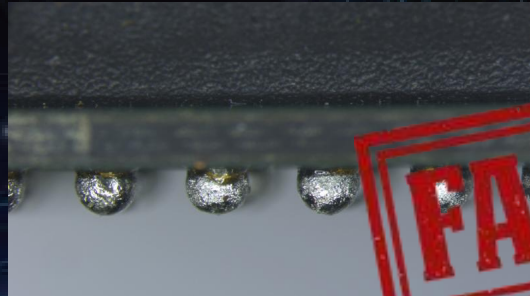
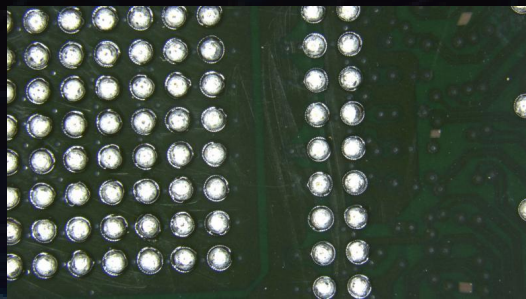
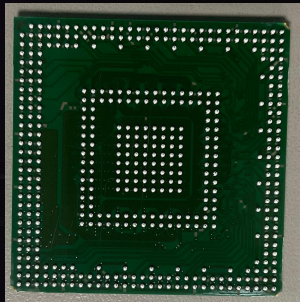
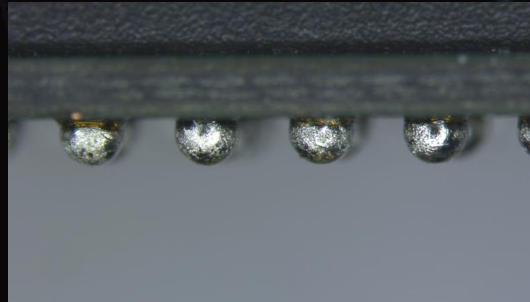
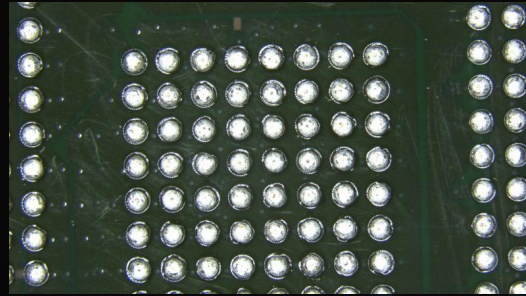
FAILED

3.2

MARVELL

High-risk Incoming Parts

| Part Number | Brand | Country of Manufacture | Date Code |
|---------------------|---------|------------------------|-----------|
| 98DX246-A2-BCW1C000 | MARVELL | TAIWAN, CHINA | 1710 |

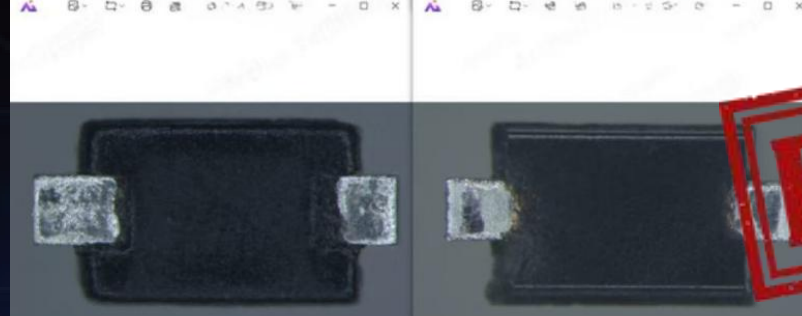
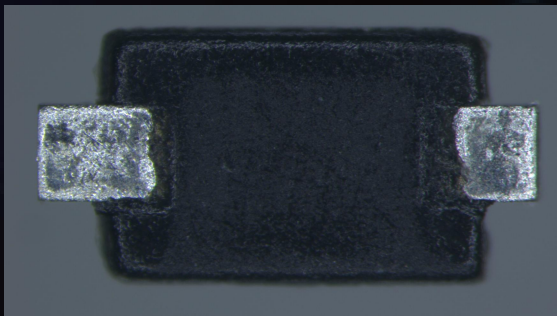
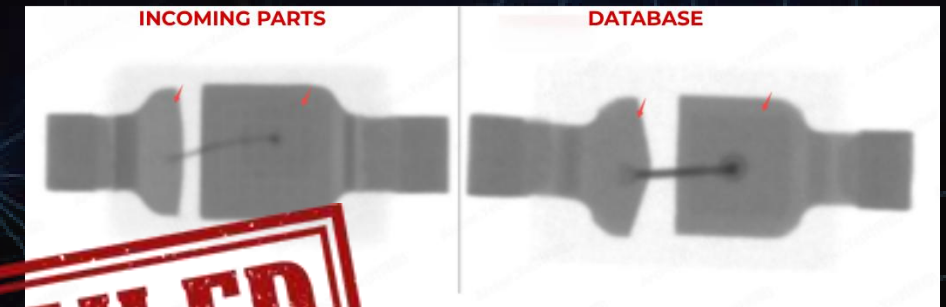
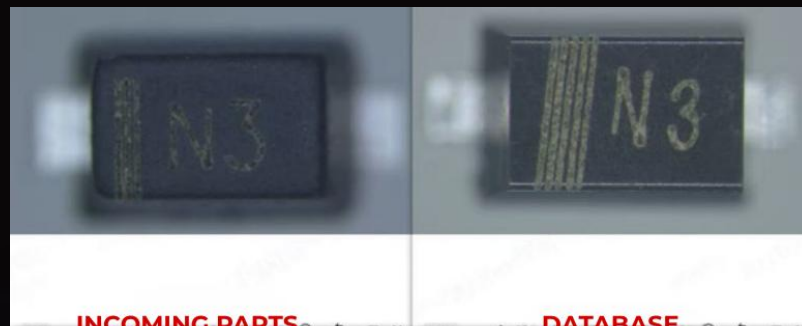
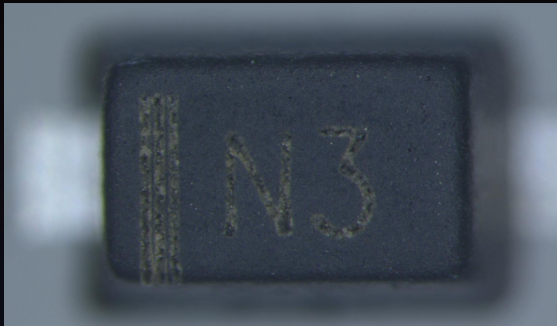


3.3

NEXPERIA

High-risk Incoming Parts

| Part Number | Brand | Country of Manufacture | Date Code |
|-----------------|----------|------------------------|-----------|
| PESD12VS1UB,115 | NEXPERIA | CHINA | 2320 |



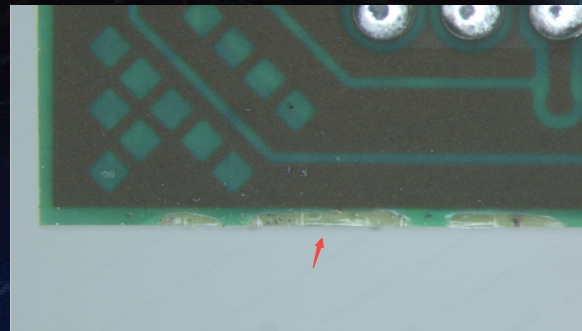
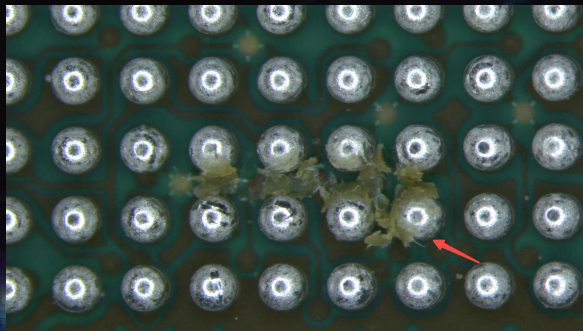
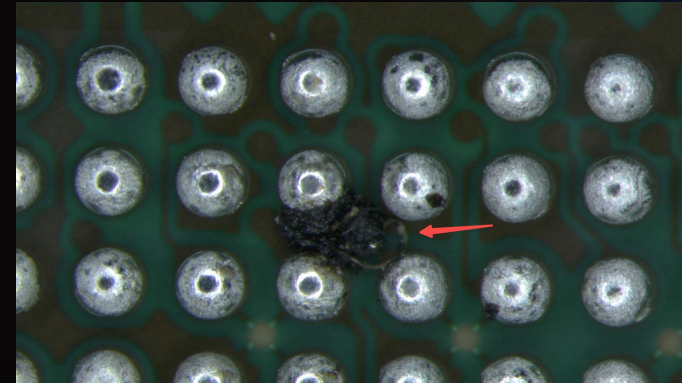
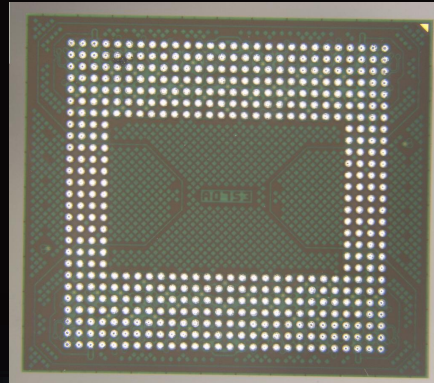
FAILED

3.4

SK HYNIX

High-risk Incoming Parts

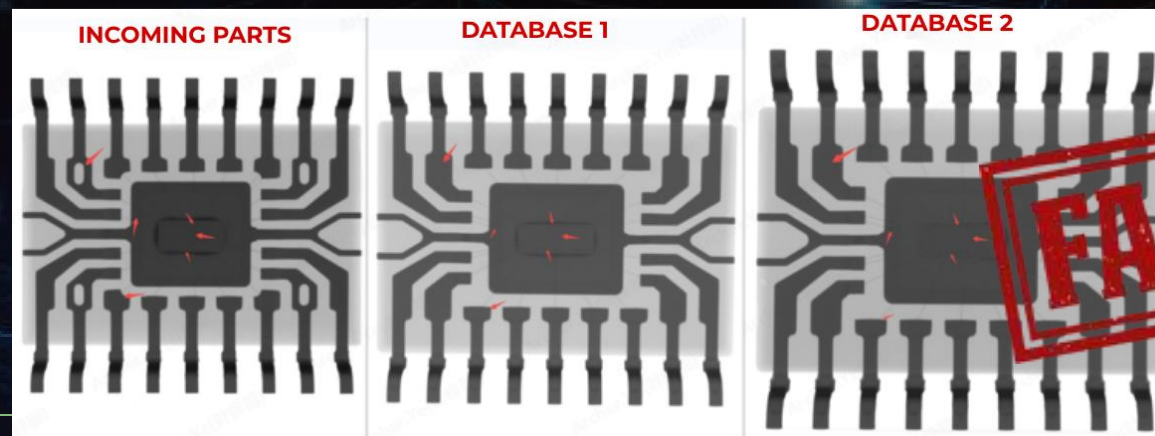
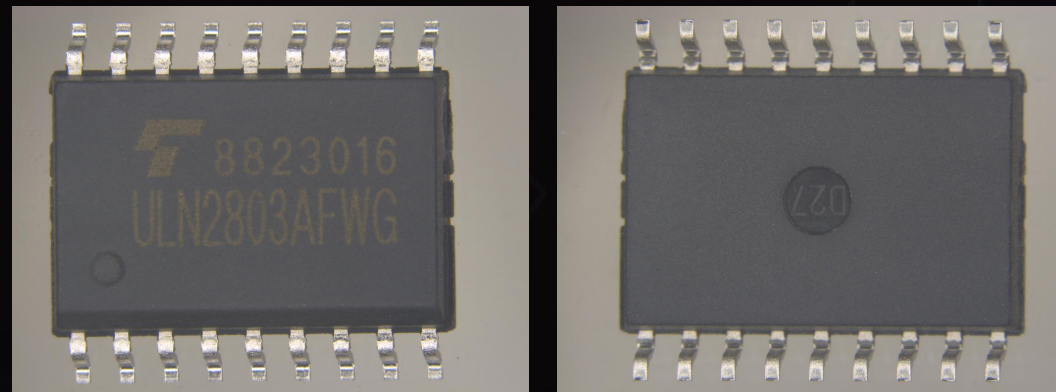
| Part Number | Brand | Country of Manufacture | Date Code |
|-----------------|----------|------------------------|-----------|
| H58G76BK8HX095N | SK HYNIX | CHINA | 25+ |



FAILED

High-risk Incoming Parts

| Part Number | Brand | Country of Manufacture | Date Code |
|-------------|---------|------------------------|-----------|
| ULN2803AFWG | TOSHIBA | CHINA | 1823 |

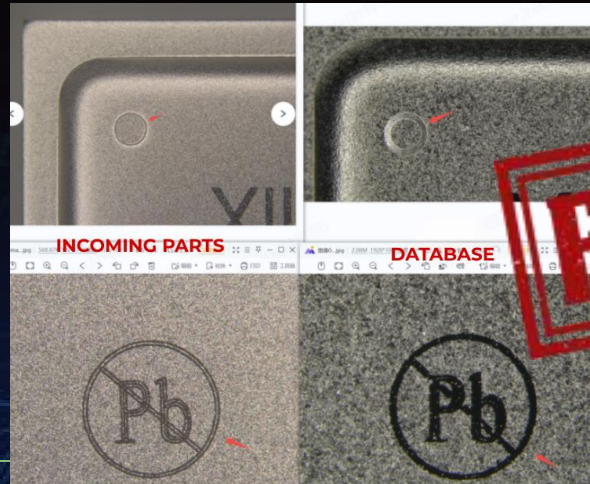
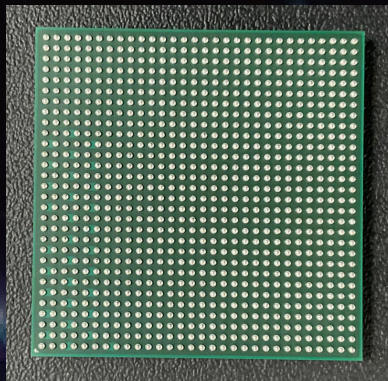
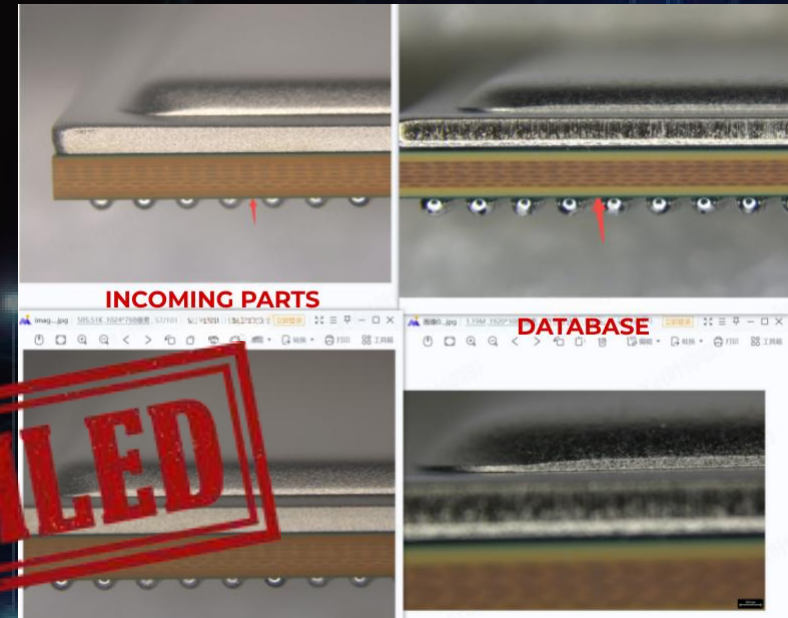


3.6

XILINX

High-risk Incoming Parts

| Part Number | Brand | Country of Manufacture | Date Code |
|-------------------|--------|------------------------|-----------|
| XC7K325T-2FFG900I | XILINX | TAIWAN, CHINA | 2413 |



Brioccean Technology

THANK YOU

Your preferred supplier in global sourcing